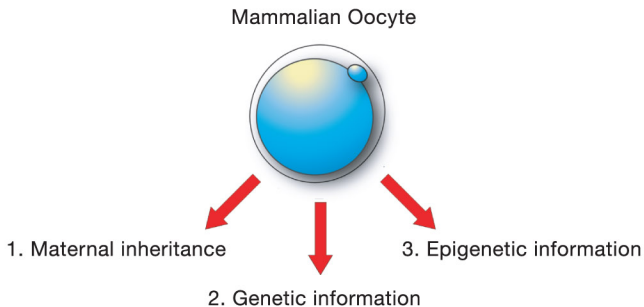
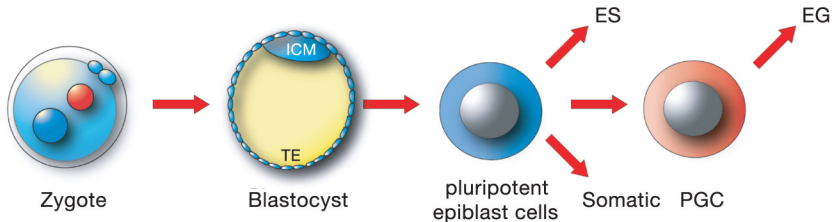


**a****b**

**Figure 1. The Mammalian Oocyte and Zygote**

(a) The mammalian oocyte contains maternal RNAs and maternal proteins (maternal inheritance), which can determine early developmental events, genetic information (maternal chromosomes), and epigenetic information (DNA methylation and chromatin marks). (b) The zygote gives rise to the blastocyst with its inner cell mass cells, which give rise to ES cells (in culture), all somatic cells, and primordial germ cells (PGC), which can give rise to EG cells in culture.